

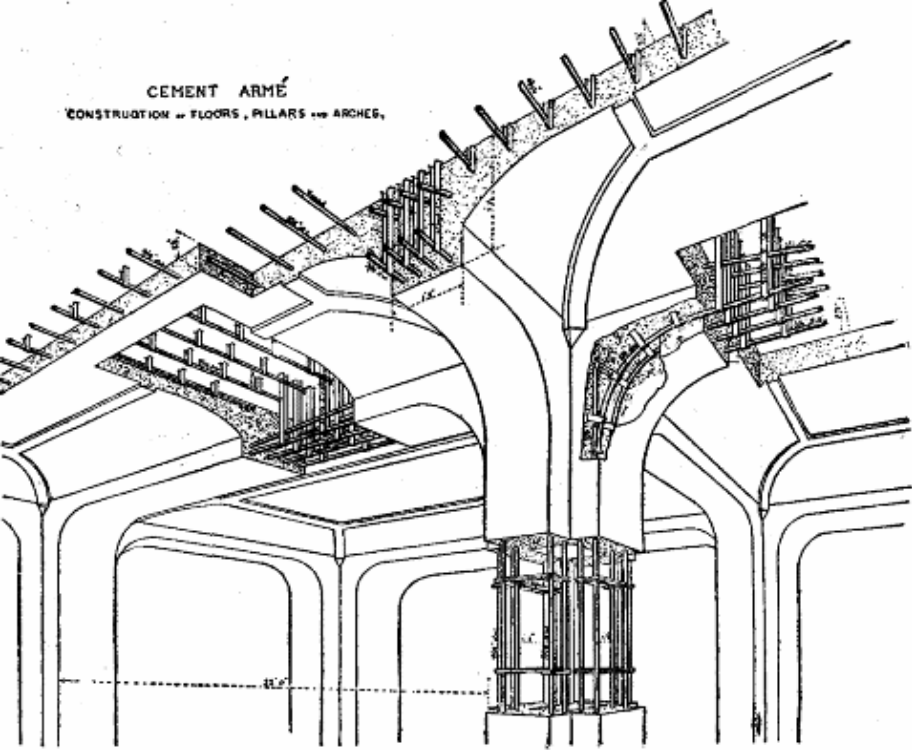
# DIE QUARZLAMPE

Predavanje 6

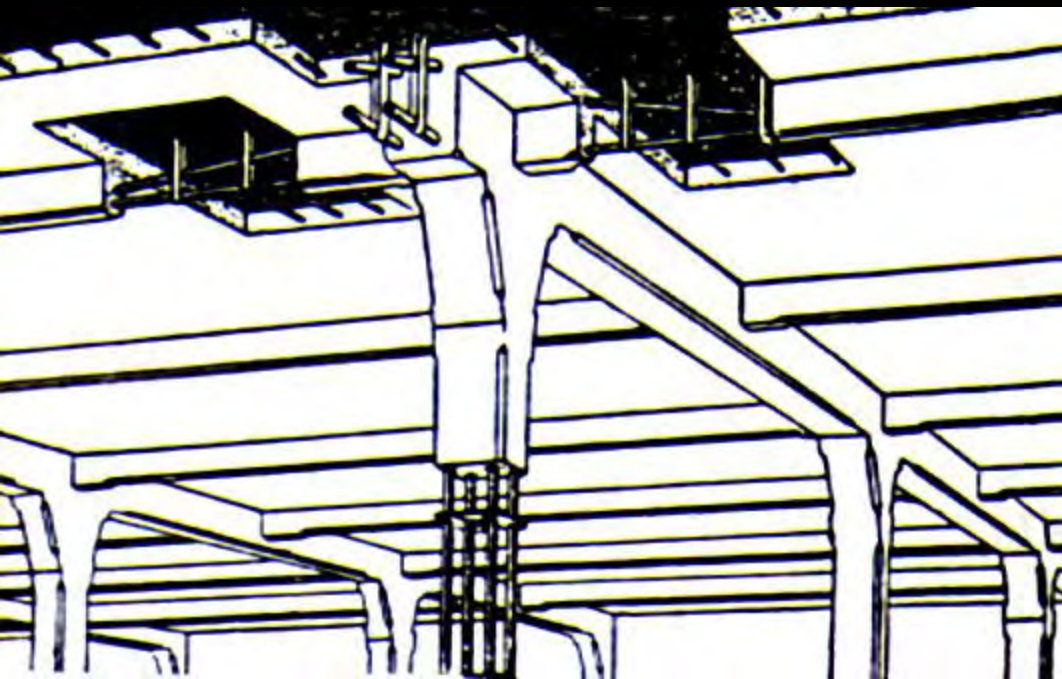
**WERKBUND, EKSPRESIONIZAM,**

**FUTURIZAM**

ALLGEMEINE  
ELEKTRICITÄTS-GESELLSCHAFT  
BERLIN



Hennebique, Monolithic **REINFORCED-CONCRETE** joint, patented in 1892





**Auguste Perret, Rue Franklin  
Apartments, PARIS, 1902-1904**



*Ne bi smeli dozvoliti da se ugradi ni jedan element koji je kreiran da sluzi samo kao ornament, nego naprotiv trebalo bi pretvoriti u ornament sve neophodne nosece delove zgrade.*

Auguste Perret, (Pointhieu) Garage,  
Paris, France, 1905.



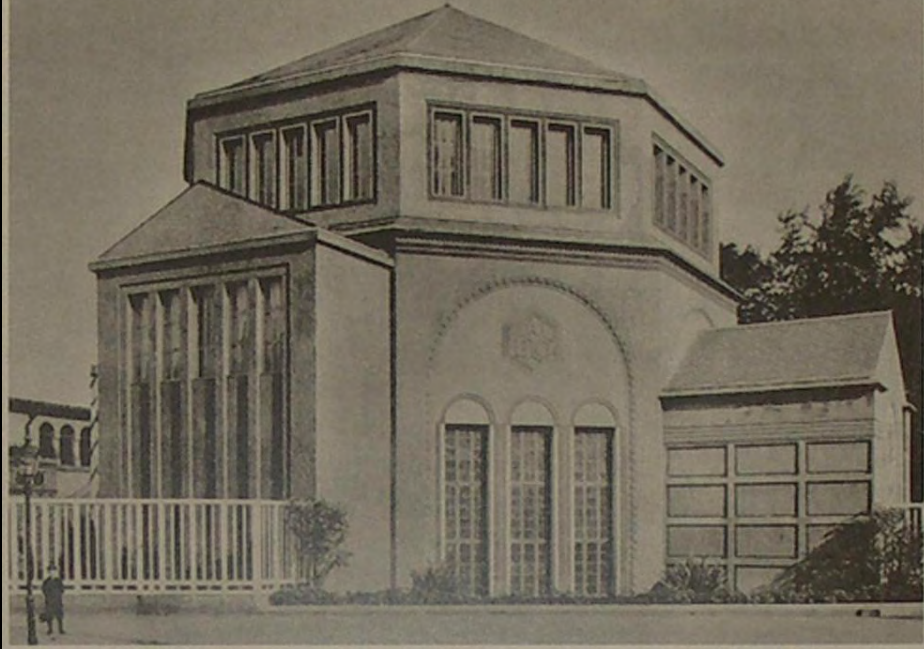
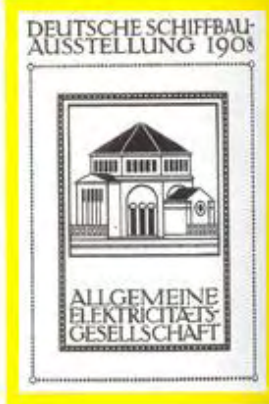
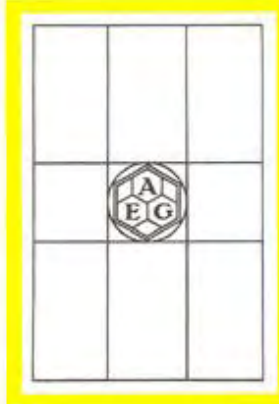
DEUTSCHE WERKBUND-  
AUSSTELLUNG  
KUNST IN HANDWERK,  
INDUSTRIE UND HANDEL · ARCHITEKTUR  
MAI CÖLN 1914 OCT.



HERMANN MUTHESISUS

**Nemacki WERKBUND**  
**1907-1914**

dalja transformacija pokreta Arts and Crafts,  
koja prihvata MASINU kao  
legitimno proizvodno sredstvo



Peter Behrens, AEG Pavilion, Shipbuilding exposition, Berlin 1908.



Peter Behrens, Turbine factory, Berlin, 1909.



Peter Behrens, Turbine factory, Berlin, 1909.





**Peter Behrens, Turbine factory, Berlin, 1909.**



**Walter Gropius and Adolf Meyer, Fagus Shoe Factory,  
Alfeld an der Leine, Germany, 1911-1912.**





**Walter Gropius and Adolf Meyer, Fagus Shoe Factory,  
Alfeld an der Leine, Germany, 1911-1912.**



**Walter Gropius and Adolf Meyer, Fagus Shoe  
Factory, Alfeld an der Leine, Germany, 1911-1912.**



**Walter Gropius and Adolf Meyer, Fagus Shoe Factory, Alfeld an der Leine, Germany, 1911-1912.**

DEUTSCHE  
WERKBUND  
AUSSTELLUNG



MAI-OKTOBER  
COELN 1914  
KUNST IN HANDWERK-INDUSTRIE  
UND HANDEL-ARCHITEKTUR



**Walter Gropius, Werkbund Exhibition. Factory and Office Building, Cologne, Office building , 1914.**



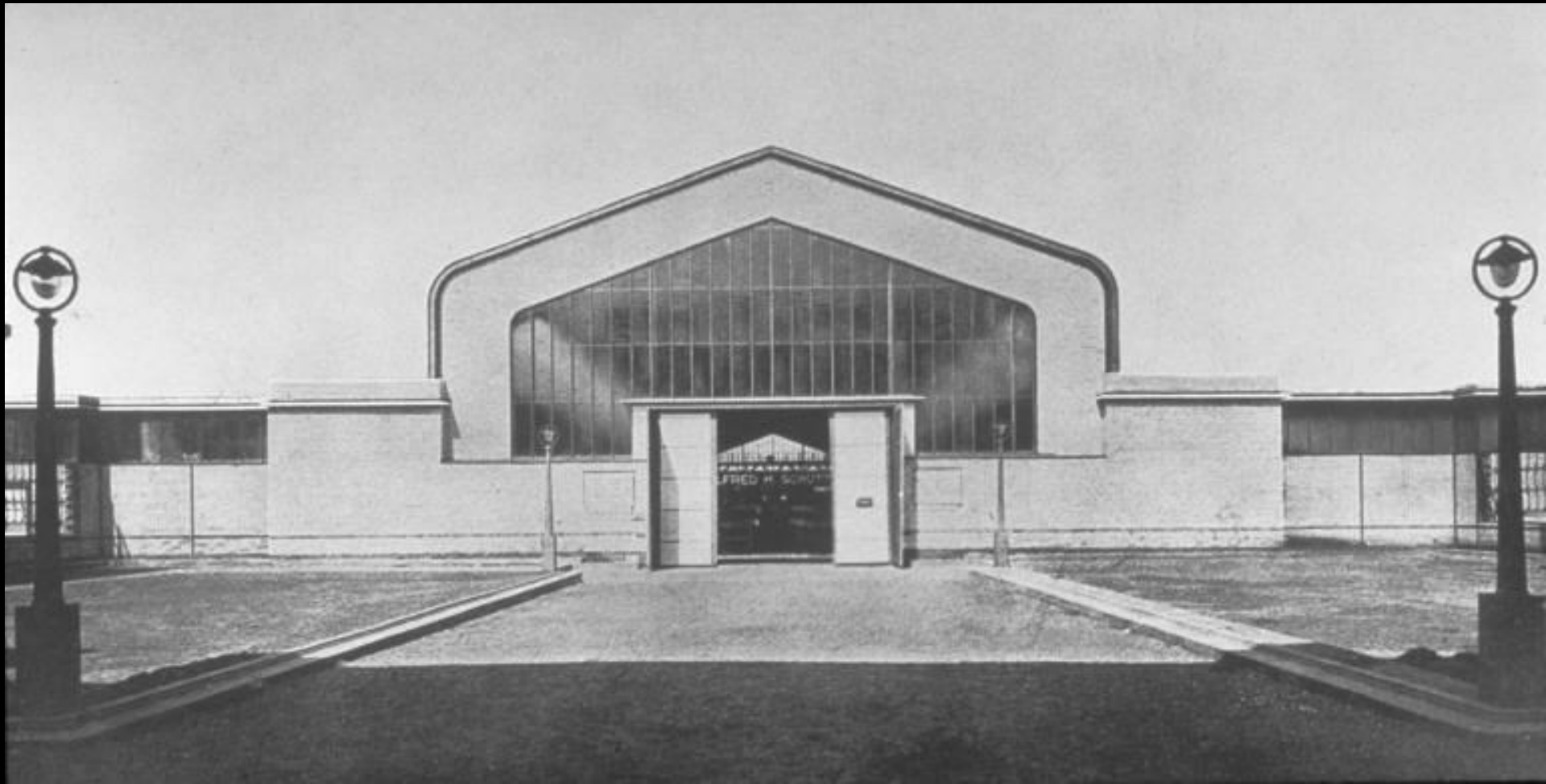


Walter Gropius, Werkbund Exhibition. Factory and Office Building, Cologne, Office building viewed from court 1914.

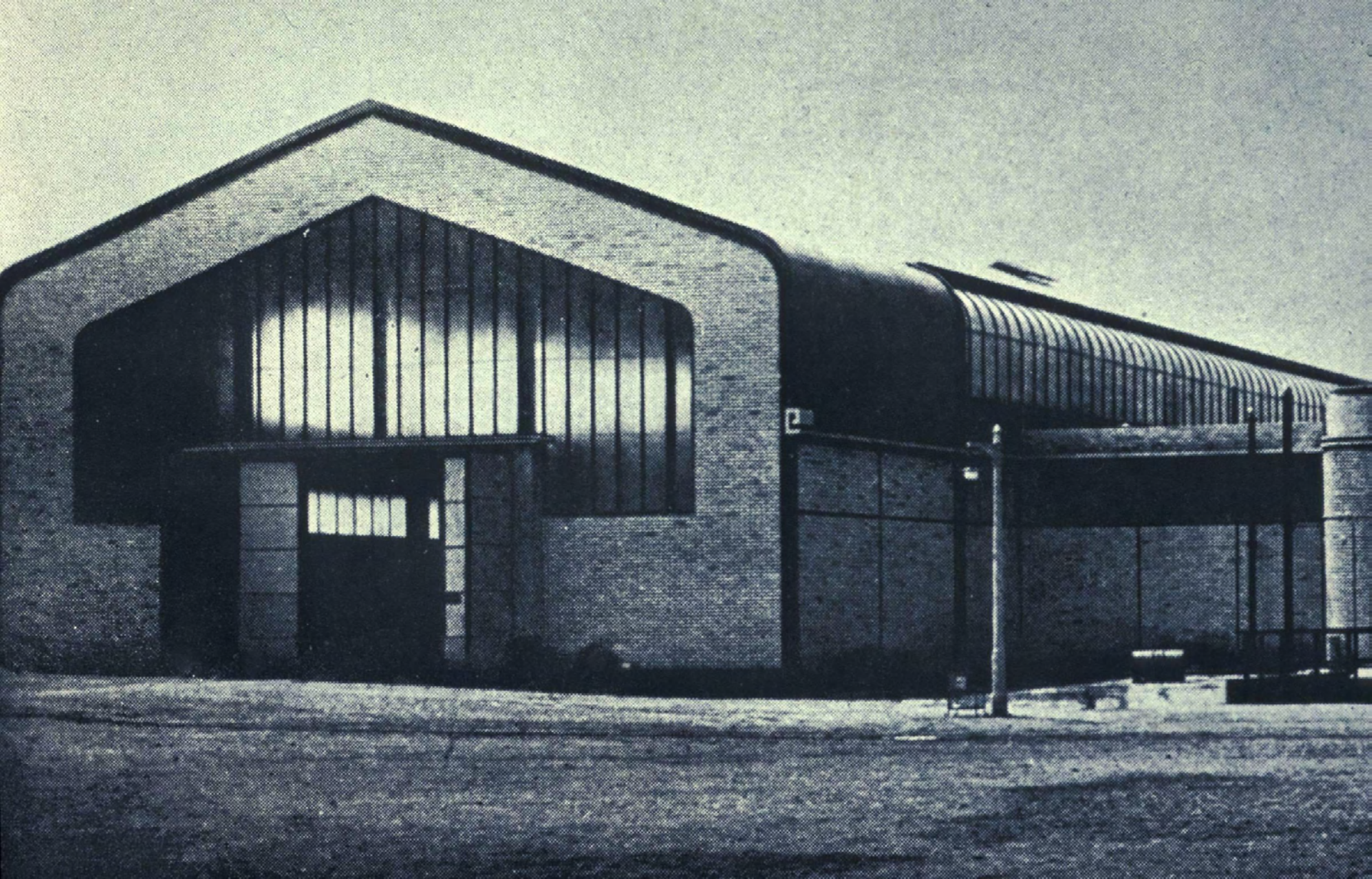


**Walter Gropius, Werkbund Exhibition. Factory and Office Building, Cologne, Office building viewed from court 1914.**

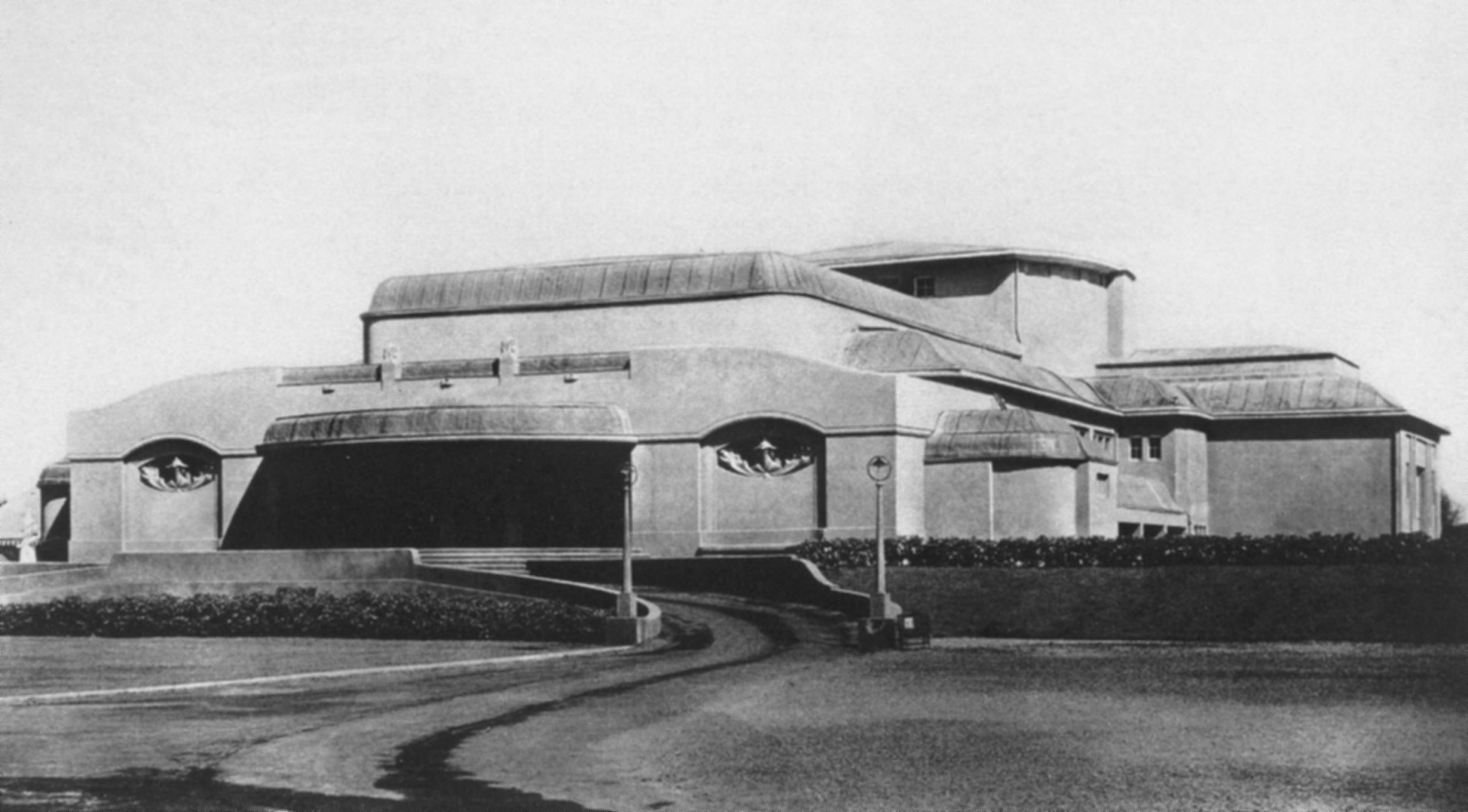
**COLOGNE, Walter Gropius, Machine Hall, 1914**



**Walter Gropius, Werkbund Exhibition. Factory and Office Building, Cologne, Factory building, 1914.**



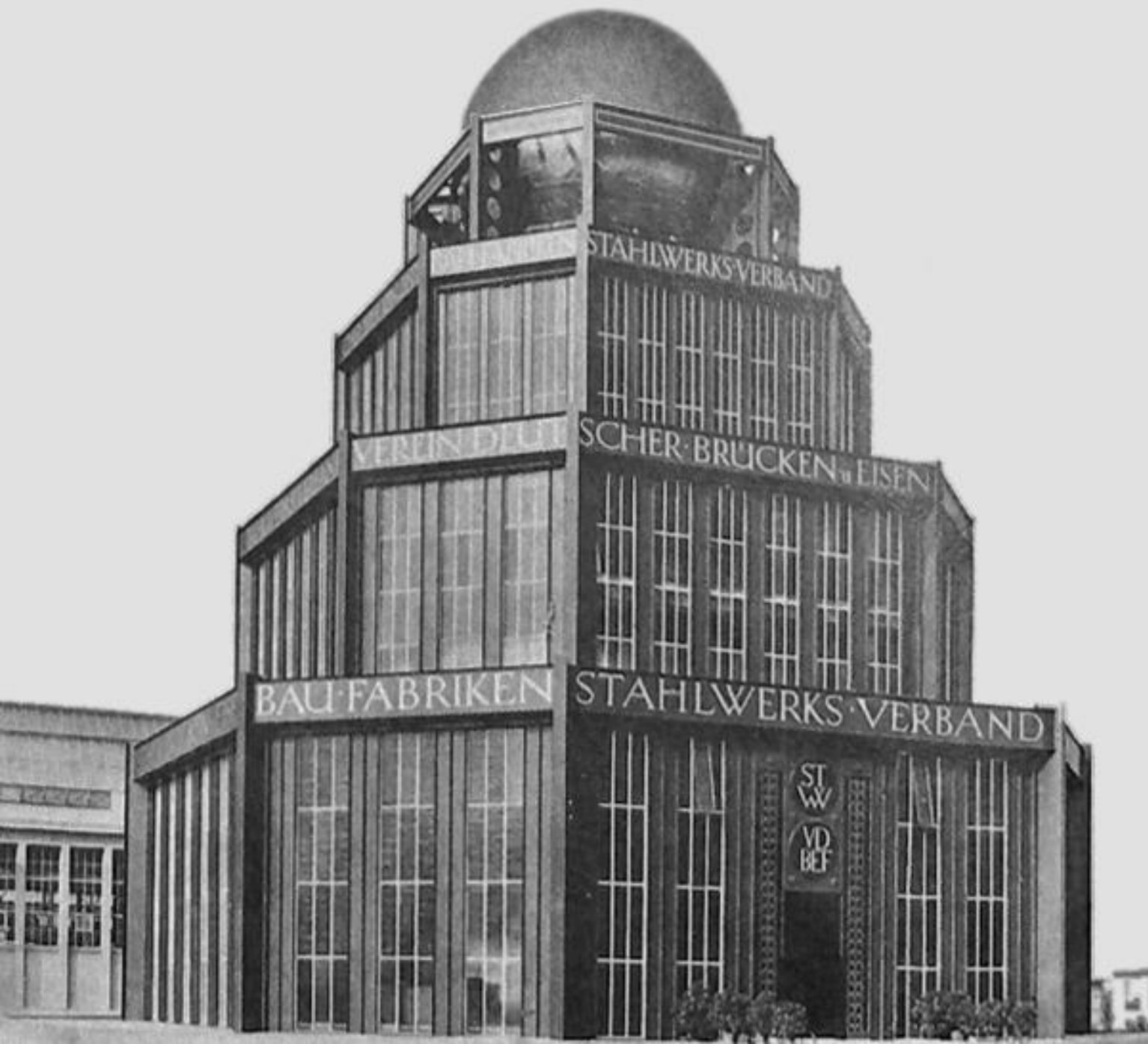
**Walter Gropius, Werkbund Exhibition. Factory and Office Building, Cologne, Factory building, NW facade 1914.**



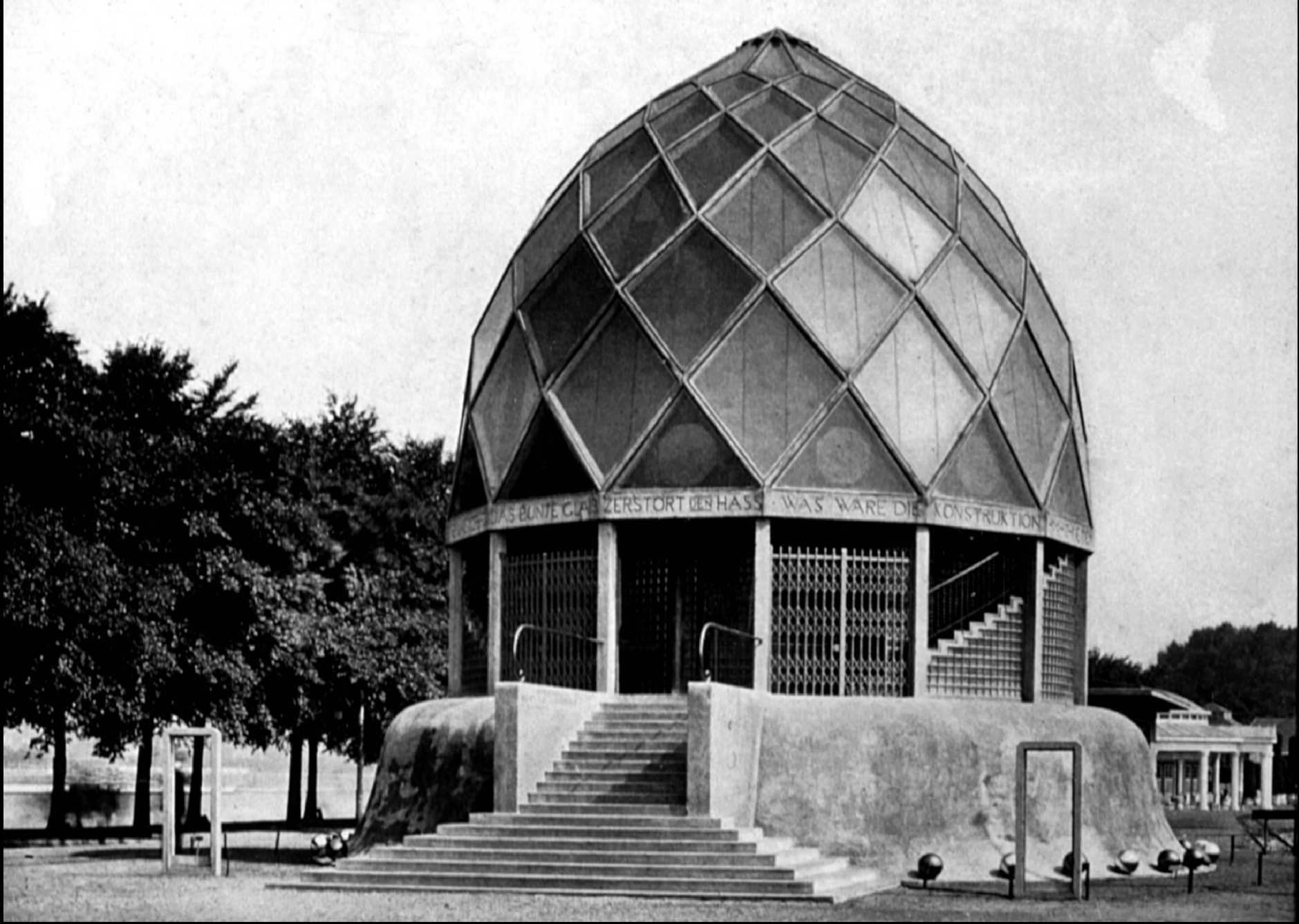
Henry van de Velde, Werkbund Exhibition. Theater, Cologne, Entrance façade, 1914.



Henry van de Velde, Werkbund Exhibition. Theater, Cologne, Interior, auditorium 1914.



Bruno Taut, Steel Industry Pavilion, Leipzig Fair, Leipzig, 1913.

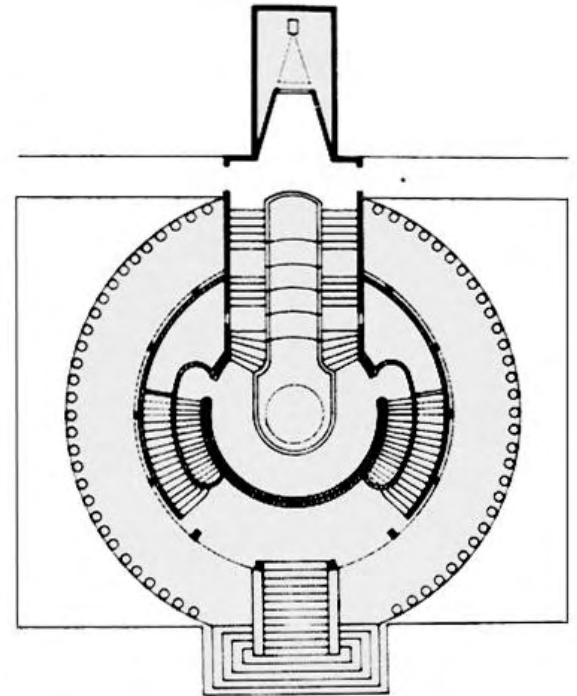
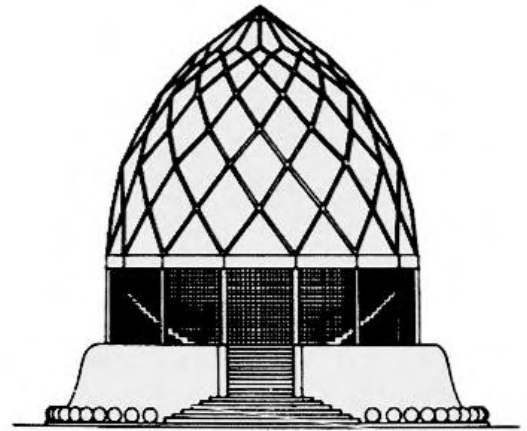


Bruno Taut, Werkbund Exhibition. Glass House, Cologne. 1914.c





Bruno Taut, Werkbund Exhibition. Glass House, Interior, Cologne. 1914.c



Bruno Taut, Werkbund Exhibition.  
Glass House, Cologne. 1914.



**Bruno Taut, Werkbund Exhibition.  
Glass House, Cologne. 1914.**

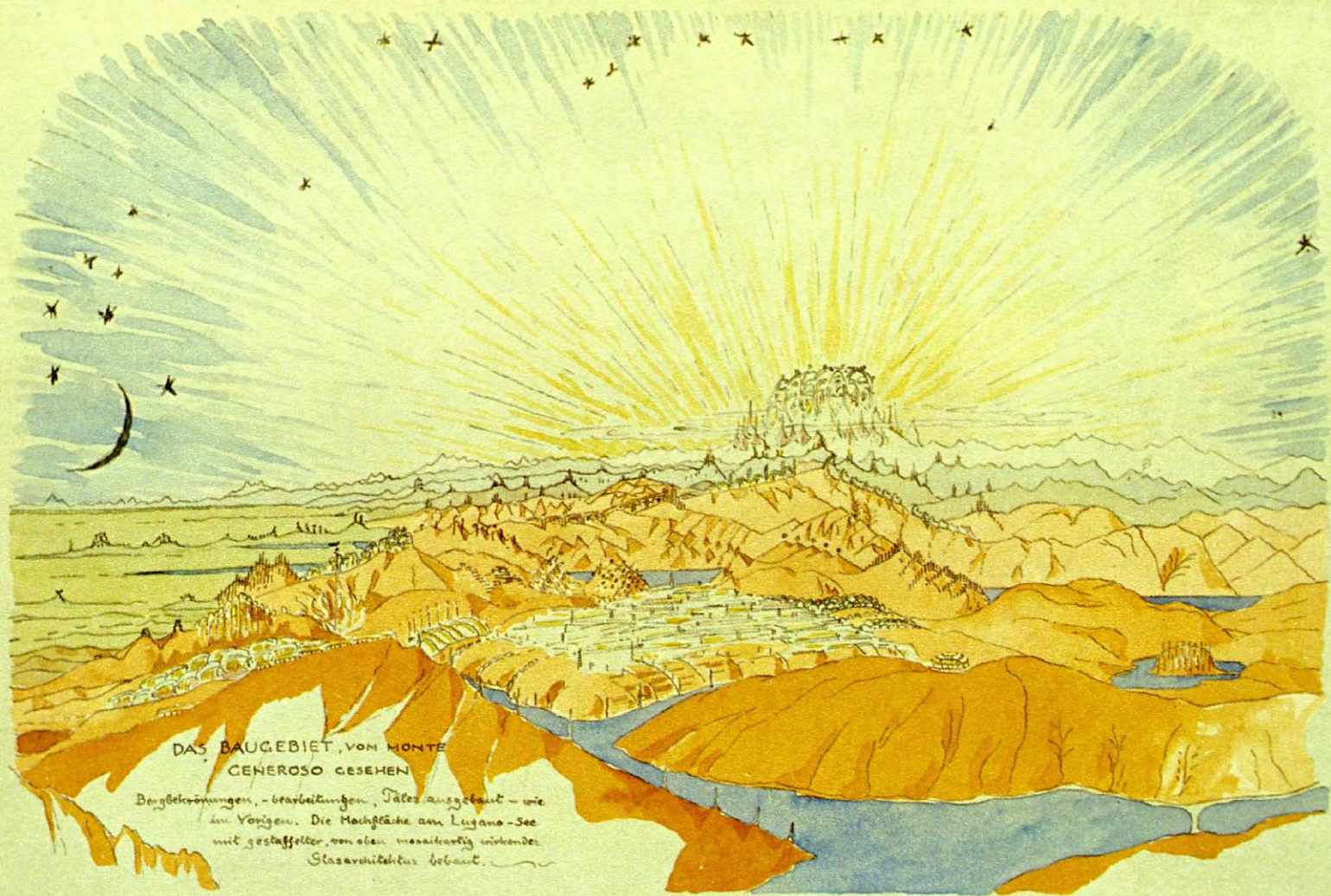


Der Sturm, Expressionists Magazine  
The Storm



Bruno Taut,  
*Die Stadtkrone* (The City Crown), 1919.  
*Alpine Architektur* (Alpine Architecture), 1919.

**Volkshouse (house of the people), Stadtkrone (city crown):  
“Crystal building of coloured glass” that would “shine like a sparkling diamond”**



DAS BAUGEBIET, VON MONTE  
GENEROSO GESEHEN

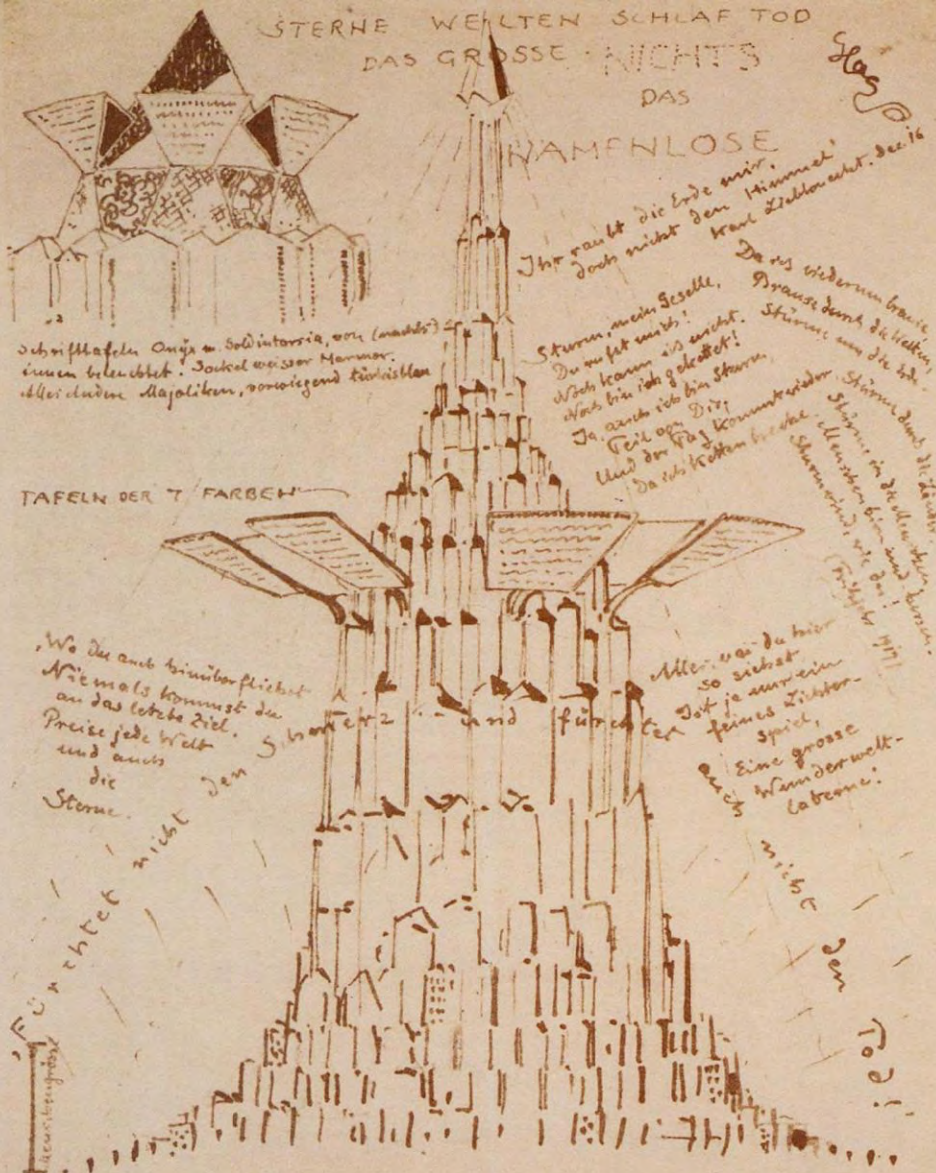
Bergbegründungen, -bearbeitungen, Täler ausgebaut - wie  
im Vorigen. Die Hochfläche am Lugano-See  
mit gestaffelter, von oben massiert wirkender  
Glasarchitektur bebaut.

Flugzeuge und Luftschiffe fahren Glückliche, die froh sind, von Krankheit und Leid durch  
Anschauen ihres Werkes befreit zu sein - in seligen Augenblicken, Reisen! und auf der  
Reise das Werk entstehen und erfüllt zu sehen, an dem man als Arbeiter irgendwie im fernen Lan-  
de mitgewirkt hat! Unsere Erde, bisher eine schlechte Wohnung, werde eine gute Wohnung!

Utopian city

Bruno Taut, Alpine Architektur, Pl.17, Construction area seen from Monte Generoso, 1919.

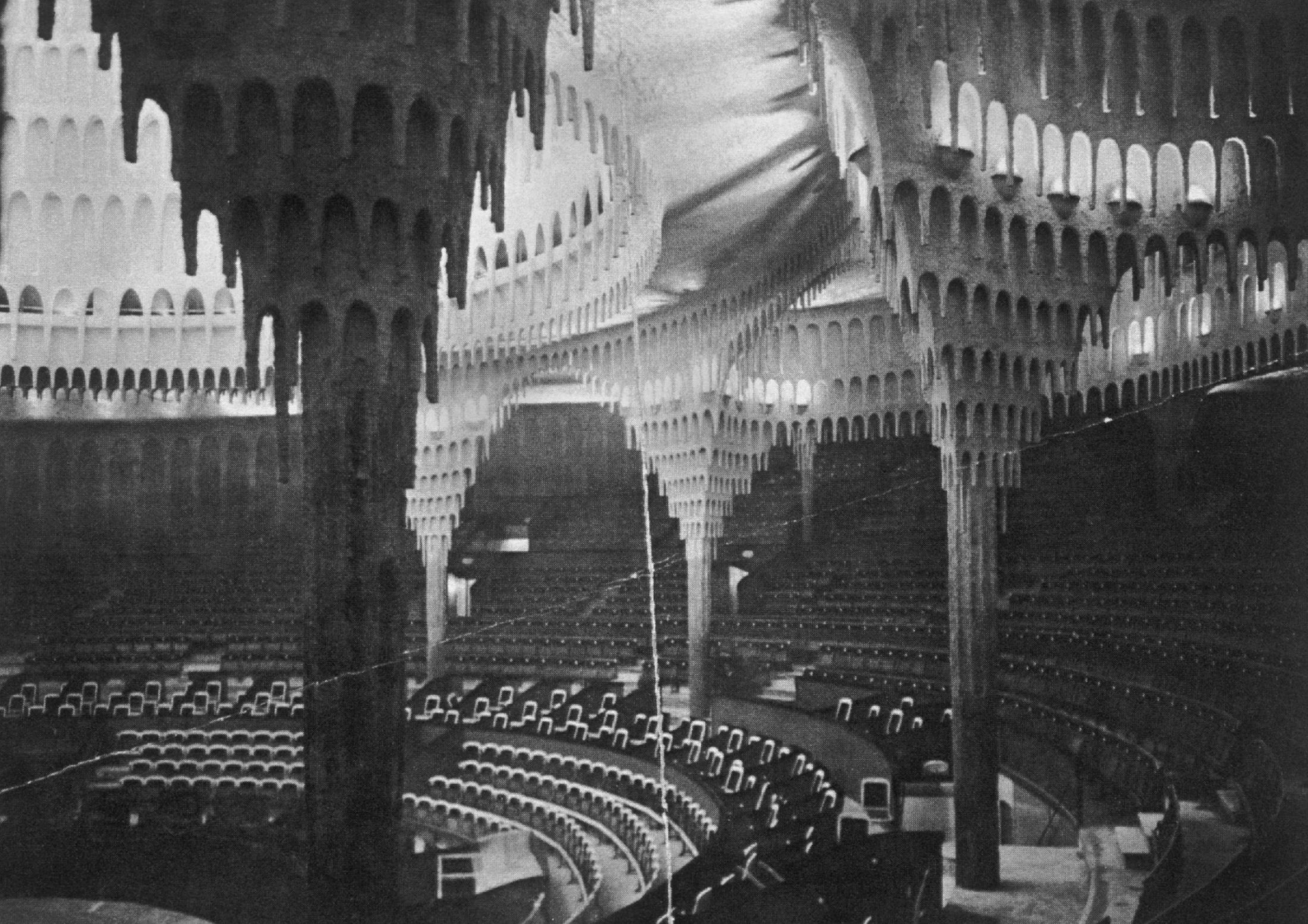
**Glaserne Kette  
Glass Chain**



**Monument des neuen Gesetzes:**

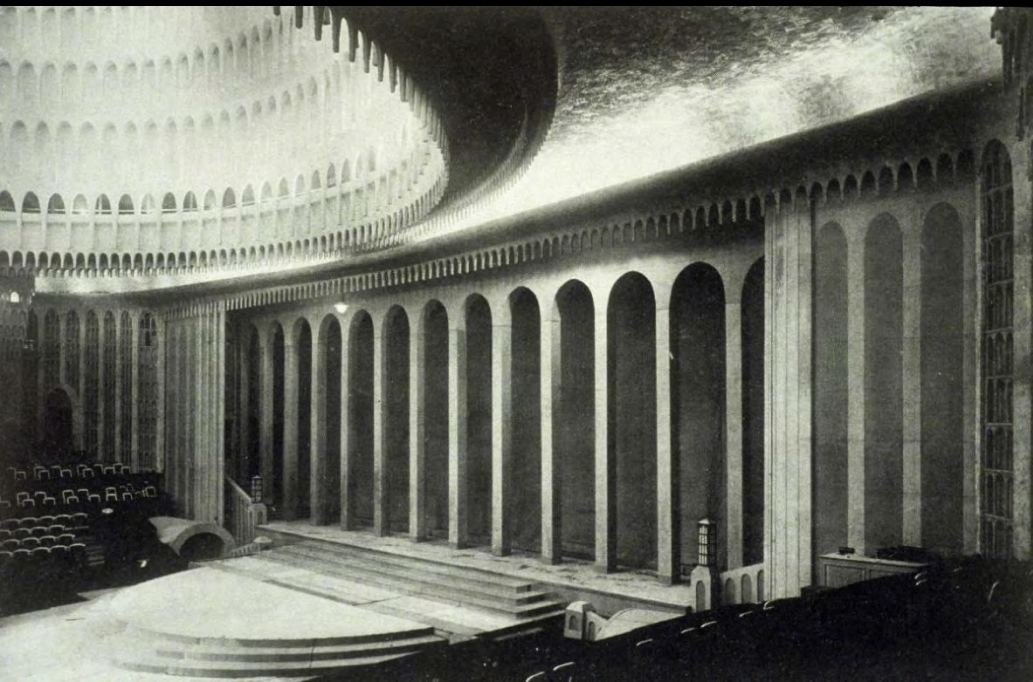
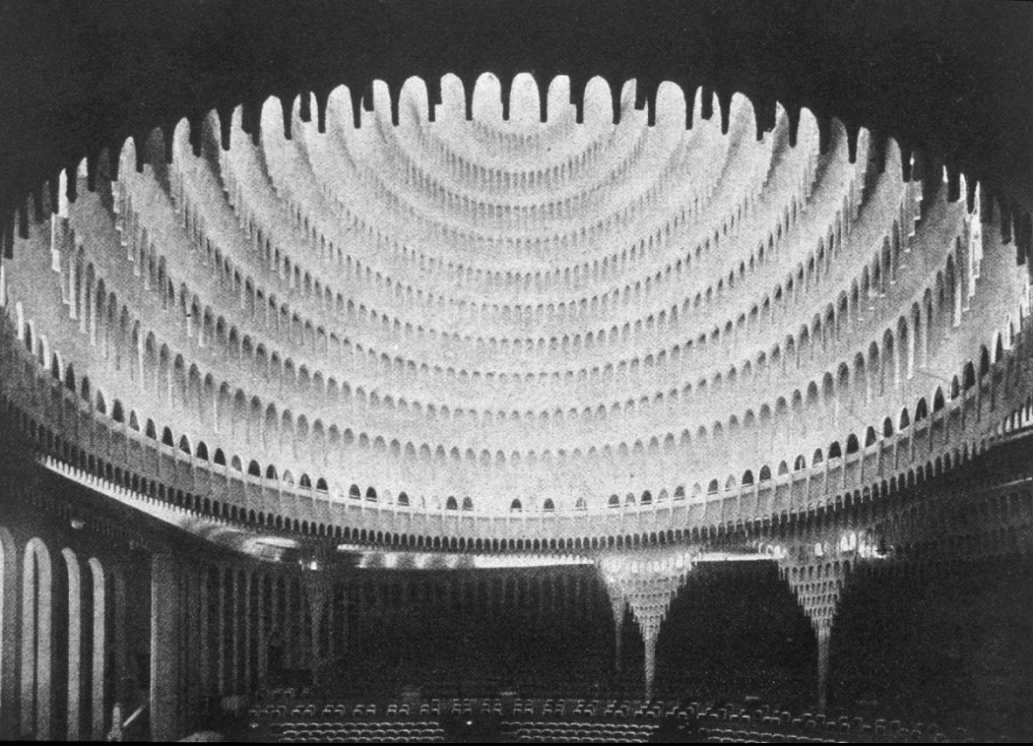
Auf Glas-tafeln geschrieben - man liest gegen den Himmel, Nachts gegen den von oben kommenden Lichtkegel:  
 1) Luther: Und wenn die Welt voll Teufel wär... 2) Lieblöndel: Sturm, mein Geselle...  
 3) Nietzsche: Vom neuen Sätzen 4) Haggai 1,1-17 5) Scheerbart: Wo Du auch hinüberfließt... 6) Offenbar. Joh. 21,9-27. 7) Scheerbart: Lesabundio: Die Sonne - Unser Gesetz!  
 ————— Stahkristallpyramide  
 WEIHNACHTS GRÜSSE : 23.12.19

**Bruno Taut, Monument des Gesetzes (Monument to the Law), letter to Glaserne Kette Group 1919.**



Hans Poelzig, Grosses Schauspielhaus, Berlin. 1919.





Hans Poelzig, Grosses Schauspielhaus, Berlin. 1919.



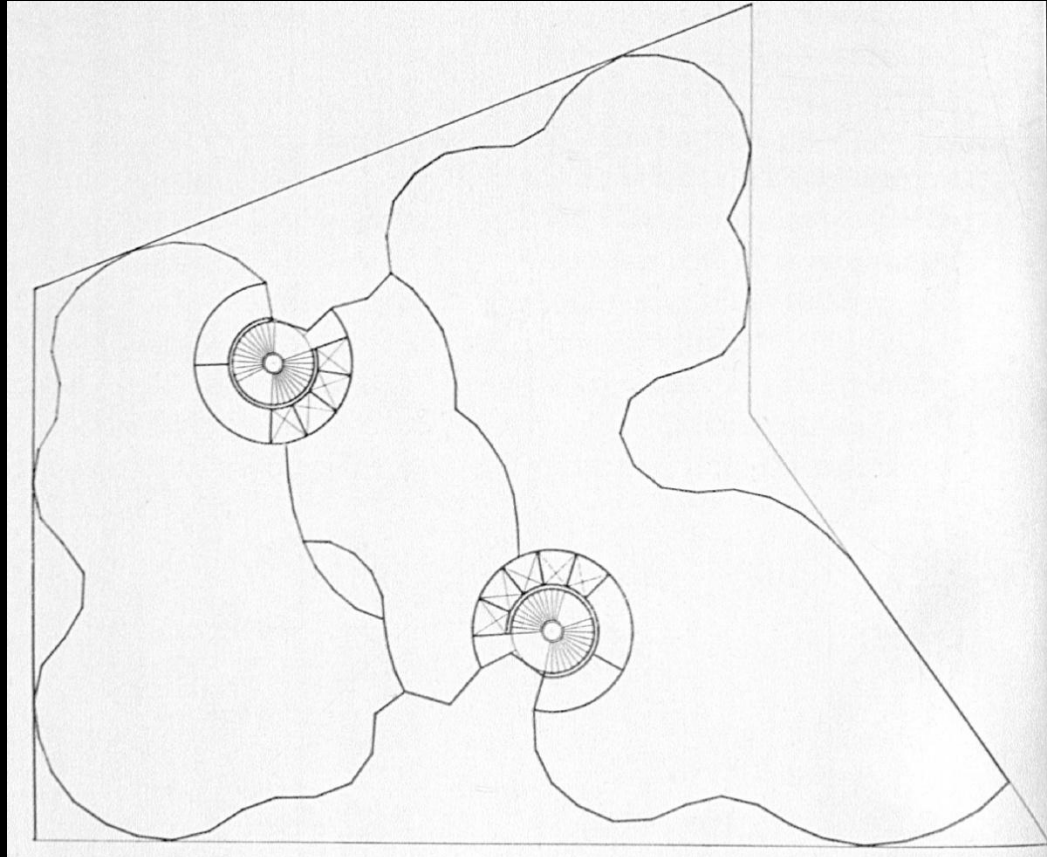
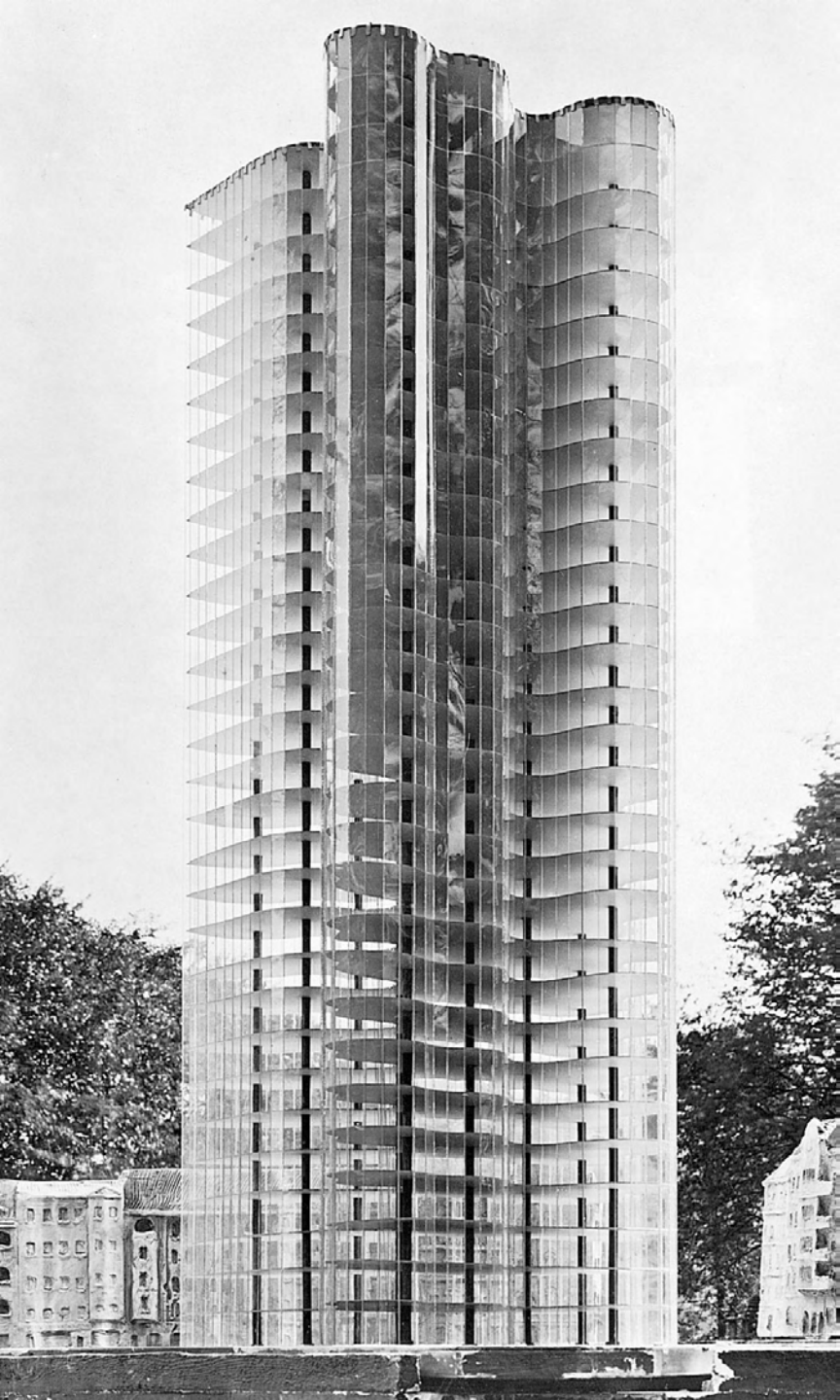
**Erich Mendelsohn, Einstein Tower,  
Potsdam, 1920-21.**



**Erich Mendelsohn, Einstein Tower, Potsdam, 1920-21.**



**Ludwig Mies van der Rohe, Competition project: Office building for Friedrichstrasse, Berlin : Plan 1921. BERLIN, Germany.**



Mies van der Rohe, Project, Glass skyscraper, Plan 1922.



**1919 Workers' uprising lead by Communist Spartacus Ligue**

**Mies Van der Rohe, Monument to Karl Liebknecht and Rosa Luxemburg, 1926 (demolished by Hitler).**

Filippo Tommaso Marinetti, *The Foundation and manifesto of Futurism*, 1909

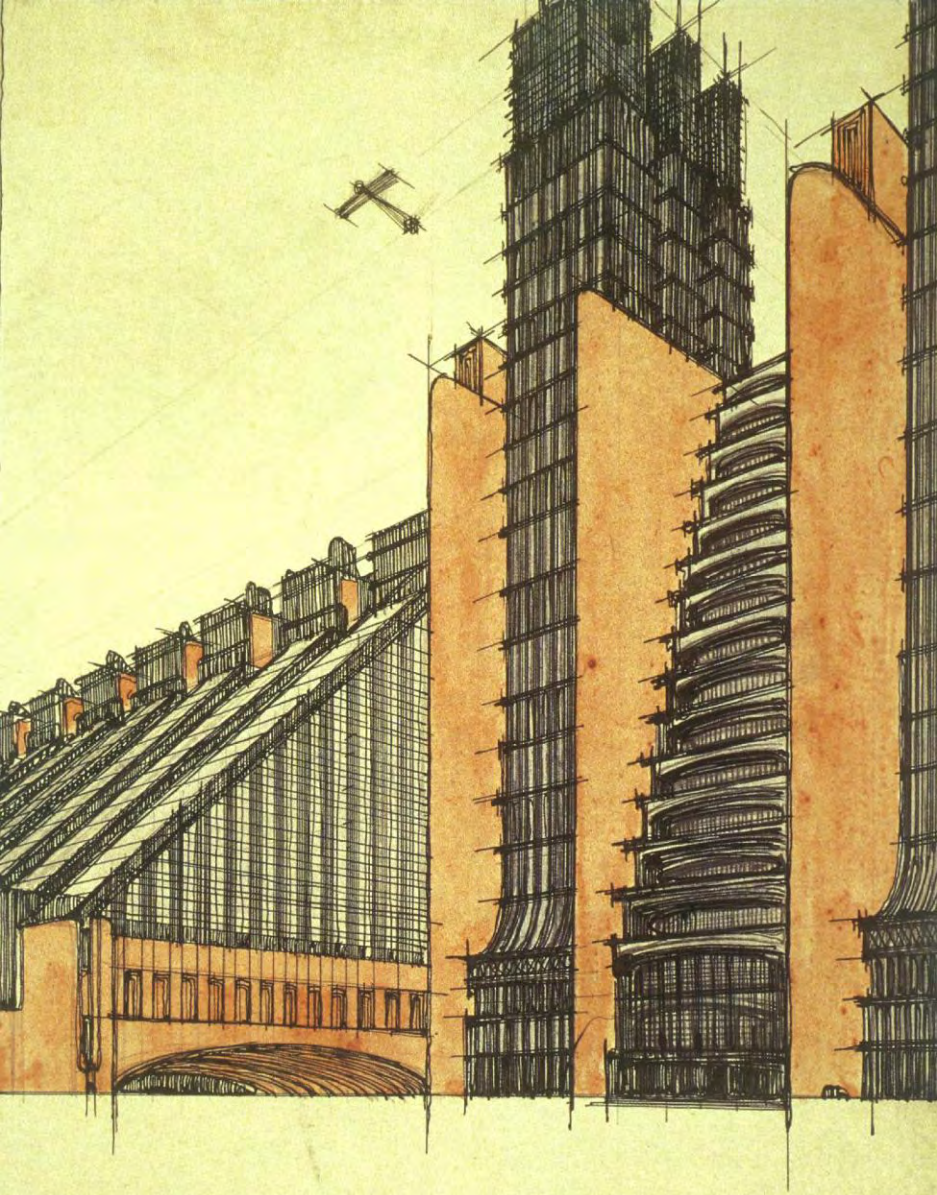


Umberto BOCCIONI, *Unique Forms of Continuity in Space*, (1913)



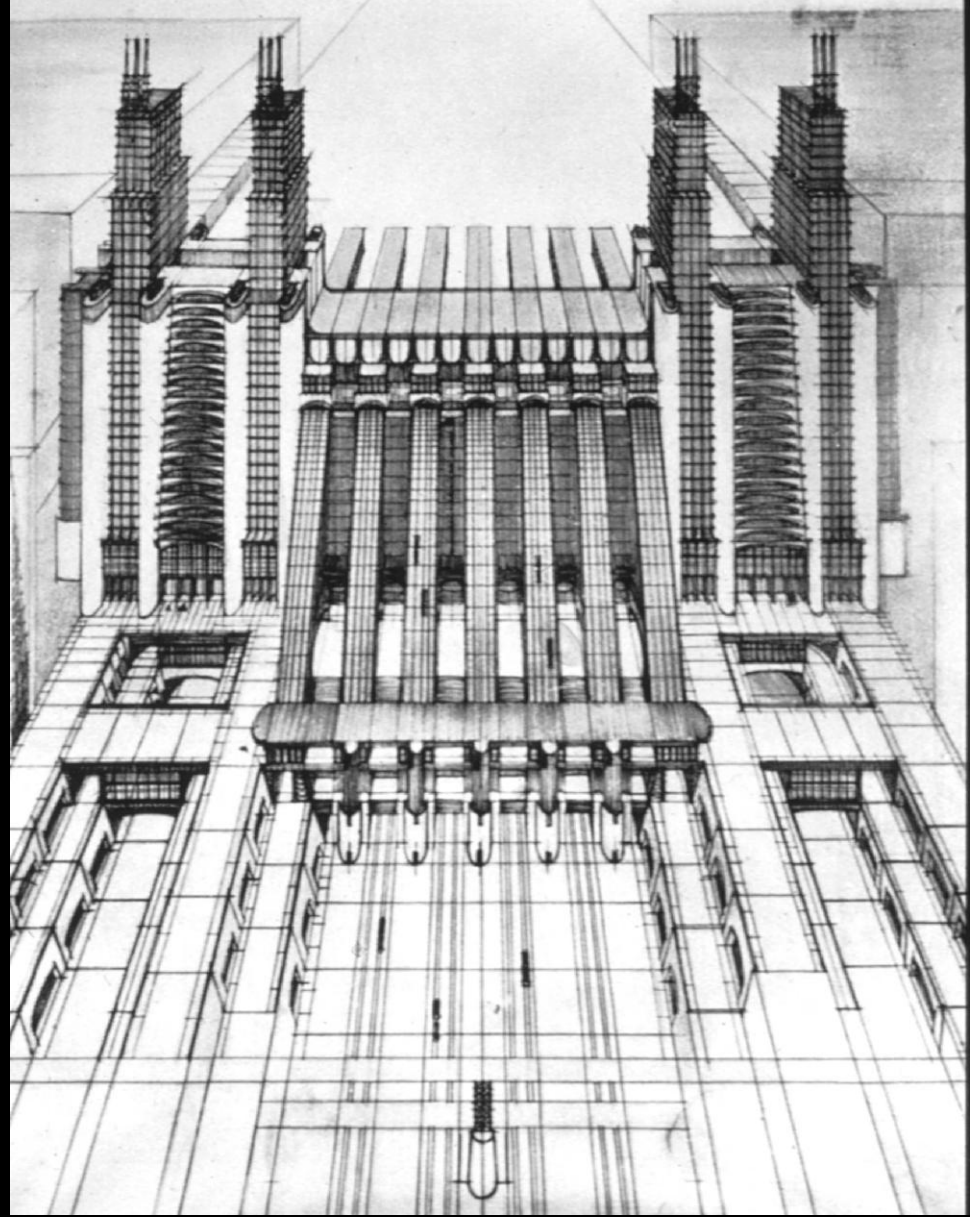
Antonio Sant'Elia, La Citta Nuova,  
Perspective with bridge 1914.



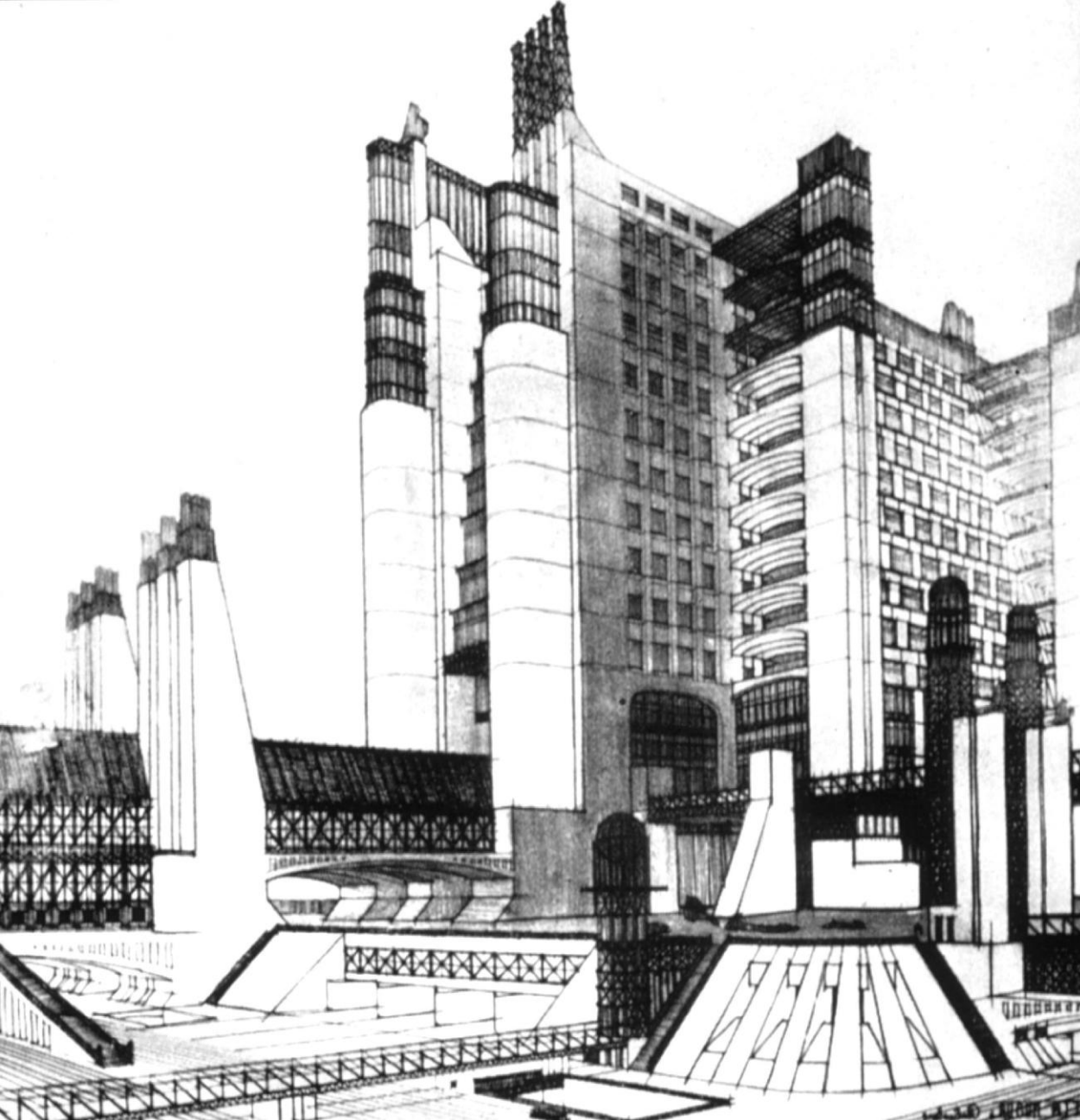


Progetto Città Nuova  
Stazione Aeroplane Crui

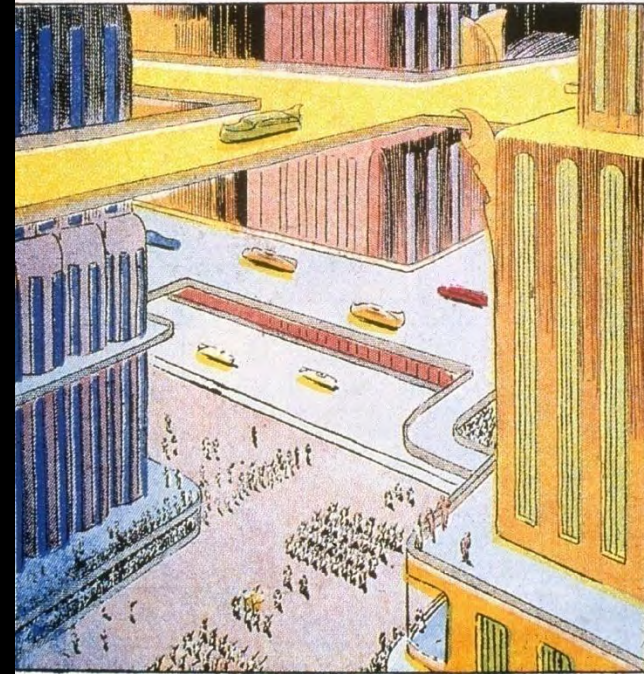
Sant'Elia



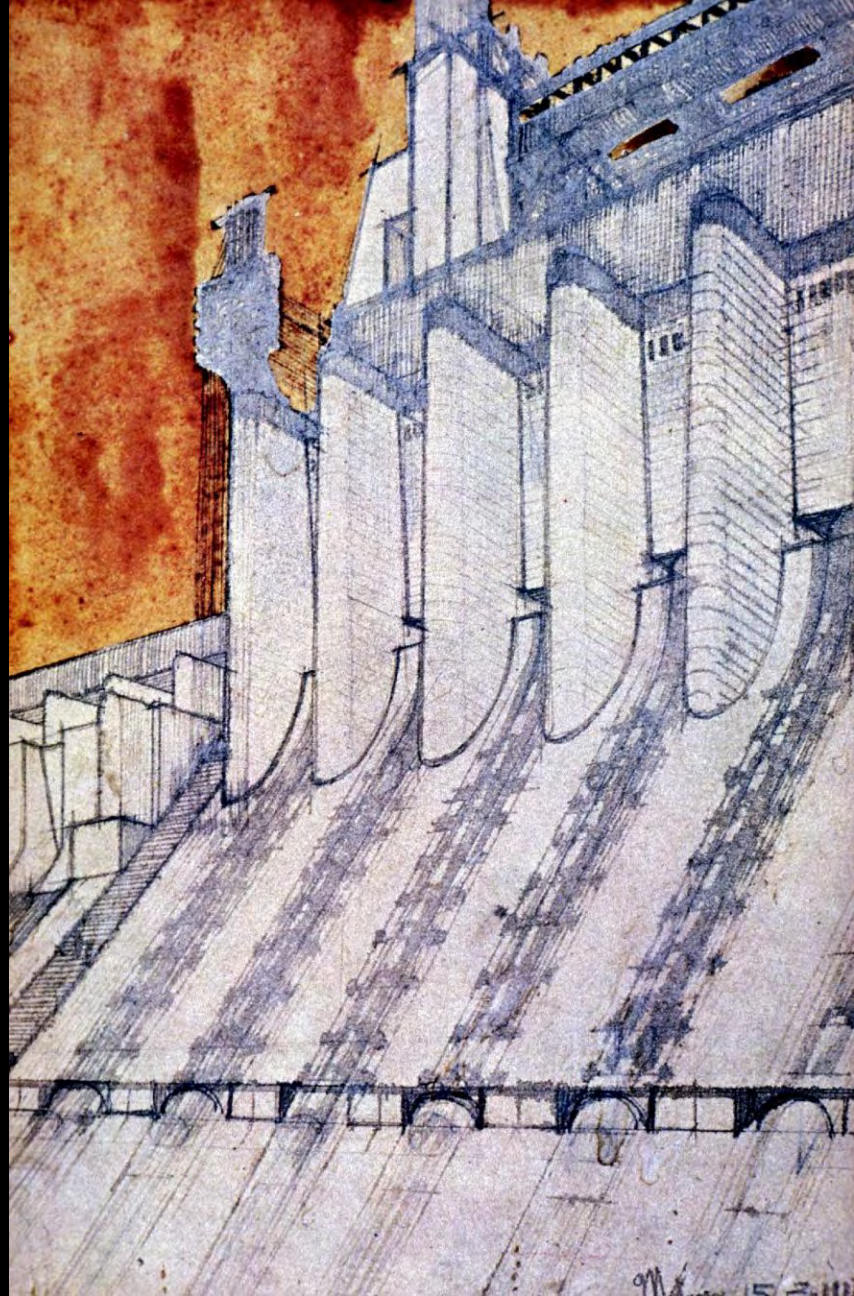
Antonio Sant'Elia, La Citta Nuova,  
Station for airplanes and trains, perspective 1914.



AT DAYBREAK ---- THE STREETS OF MING'S CAPITAL CITY ECHO TO THE TRAMP OF THE VICTORIOUS DESERT LEGION



Antonio Sant'Elia, La Citta Nuova, Perspective with external ascents at street level 1914.



Antonio Sant'Elia, La Citta Nuova,  
Central Electric project, perspective 1914.



*The Cabinet of Dr. Caligari*, a silent film by Robert Wiene, 1920

**Filippo Tommaso Marinetti, 1920**

***Treba da preduzmemo stvaranje coveka koji nije human, iz koga cemo eliminisati moralni plan, dobrotu i ljubav. i strast koje nagrizzaju neunistivu energiju.***

***We shall aspire to the creation of a type of man who is not human, from whom will have been eliminated moral plan, goodness, and love, the passions that can corrode inexhaustible energy.***

# Tony Garnier, *Cité Industrielle*, 1917

## UNE CITÉ INDUSTRIELLE

ÉTUDE POUR LA  
CONSTRUCTION DES VILLES

TONY GARNIER

ANCIEN PENSIONNAIRE DE L'ACADÉMIE DE FRANCE À ROME  
ARCHITECTE À LYON

TITRE I

DR. MASSIS & C. INGÉNIEURS S. 100 RUE RICHELIEU, PARIS

- Zoning: residential  
industrial  
recreational  
transport areas
- Reinforced concrete  
Standardization  
Repetition  
Flat roofs  
Cubic forms



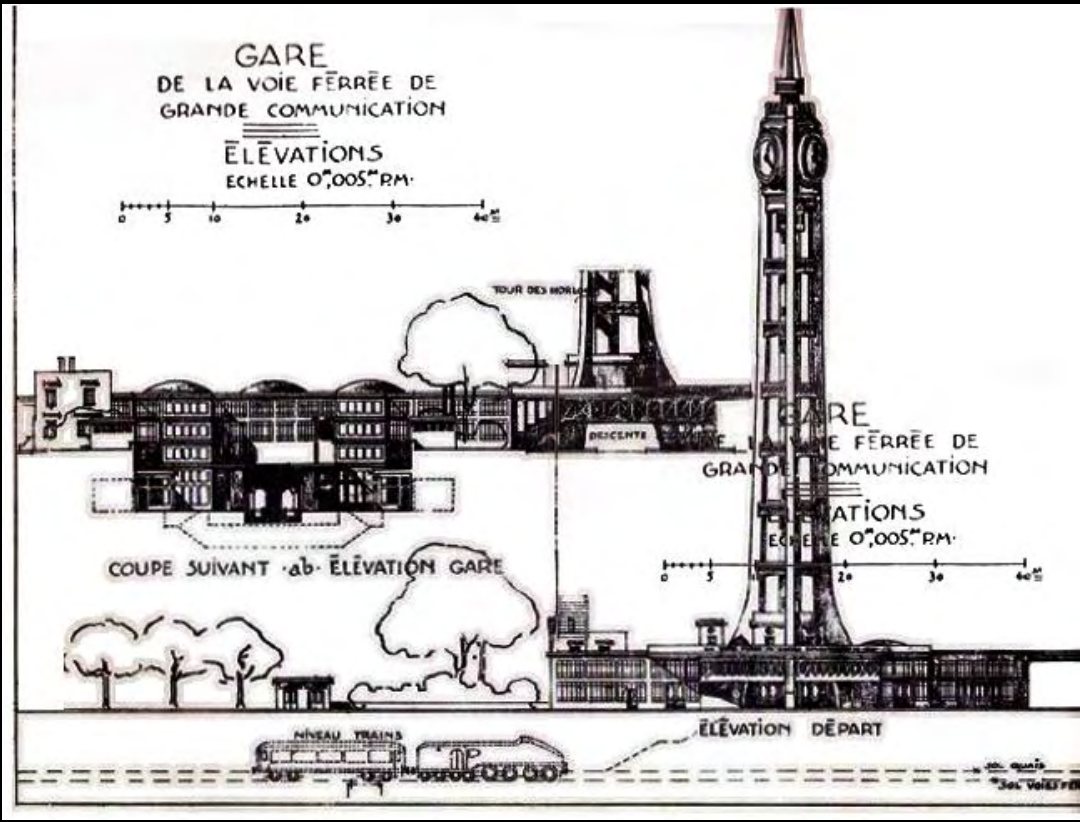
CITÉ INDUSTRIELLE  
TONY GARNIER ARCHITECTE.



CITÉ INDUSTRIELLE  
TONY GARNIER ARCHITECTE

**Tony Garnier, Cité Industrielle, 1917**

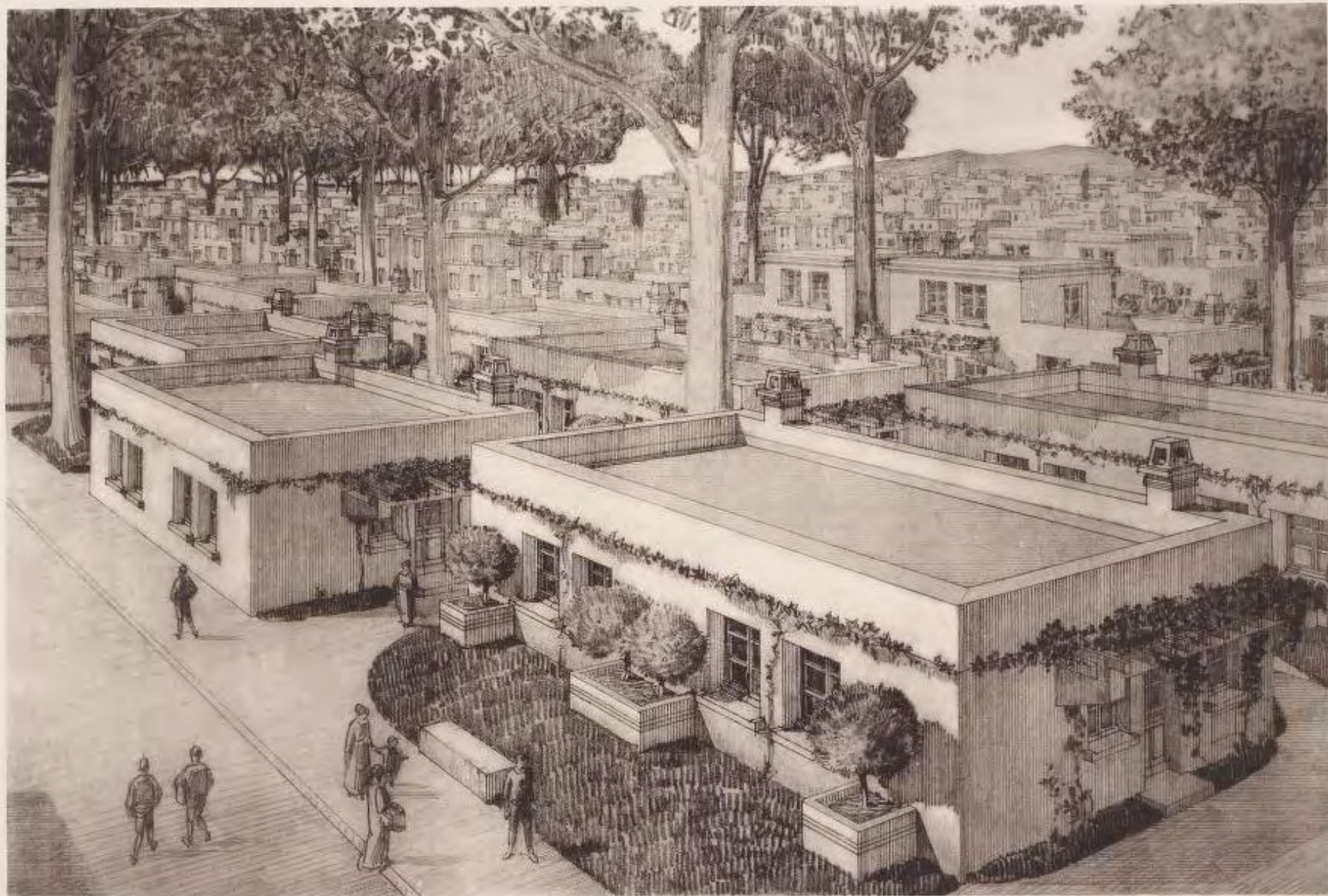




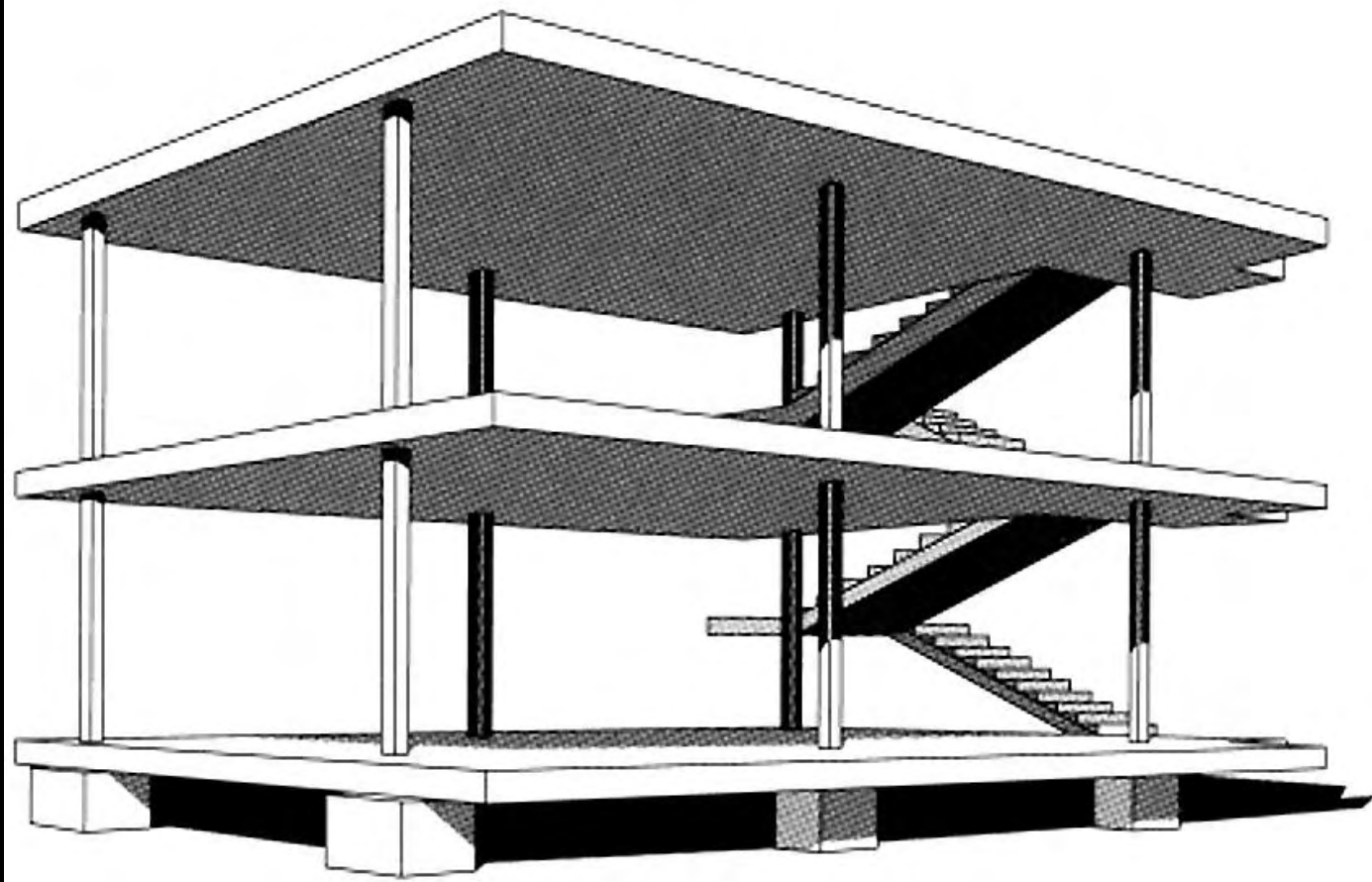




CITE INDUSTRIELLE  
TONY GARNIER ARCHITECTE



CITE INDUSTRIELLE  
TONY GARNIER ARCHITECTE



**Charles Eduard Jeanneret (Le Corbusier)**, Project, Domino housing  
Perspective of structural scheme 1914-1915.

*...Dwellings will incorporate the principle of mass-production and of large-scale industrialization...  
Building "to measure" will cease...*

*...If we eliminate from our hearts and minds all dead concepts in regard to houses and look at the question from a critical and objective point of view, we shall arrive at the "House Machine," the mass production house, healthy (and morally so too) and beautiful in the same way that working tools and instruments which accompany our existence are beautiful...*